

atmoTEC and turboTEC –
an ongoing success story “Made in Germany”



Gas wall system and
combination boilers
atmoTEC pro and
turboTEC pro
atmoTEC plus and
turboTEC plus

High comfort with German



Vaillant presents the latest innovations in the wall hung boiler segment - atmoTEC & turboTEC. Both combine the best qualities of their forerunners with the newest innovative technological developments which will convince customers with their tailor made solutions and flexibility.

Our atmoTEC and turboTEC ranges are modern compact non condensing gas wall-hung boilers which are suitable for new construction as well as the modernisation of buildings. In line with our traditions of quality and excellence this new range of high class products is made exclusively in Germany in our production site in Remscheid, where Johann Vaillant founded the company more than 130 years ago. Since then Vaillant has been constantly developing and improving the tailor made heating solutions for our valued customers - it is our distinct aim to improve your home comfort with our innovations and services.

Vaillant engineering ensures your safety and highest functionality at the same time.

Clever and flexible

Our appliances technology guarantees flexible solutions for all applications and installation situations such as solar systems which can be connected whenever required. State-of-the-art control technologies are available for combination with our heating and warm water appliances. The Vaillant atmoTEC and turboTEC introduce you to a whole new feeling of quality-oriented heating technology. They meet all demands placed upon them regarding heating and domestic hot water comfort.

Regardless of any previous installation or special space requirements, these appliances do always fit. The result is in every case a spotlessly clean heating installation. Furthermore, the attractive overall impression is rounded off by the award-winning appliance design. And furthermore by what you cannot see - the level of technology displayed inside - will delight you.

technology

Prepared for the future: Innovative technical features in our atmoTEC and turboTEC ranges make this boiler generation ready for the future.



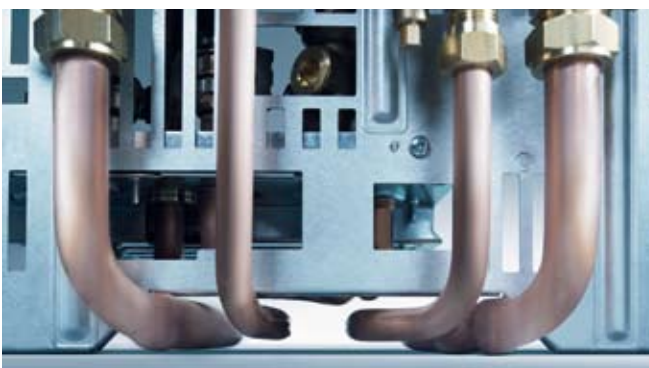
Prepared for solar re-heat the atmoTEC and turboTEC can easily be combined with a solar system of our range via our system components.



The new hydraulics have got an integrated, adjustable by-pass. A filter protects the secondary heat exchanger in the mixed boiler types. Stable output temperature of the domestic hot water is assured by the new aquasensor.



The modern eBUS electronics enables the boiler to communicate with additional services as controls or other technical surveillance accessories, as well as vice versa.



Horizontal connections make the installation of the atmoTEC / turboTEC easy and allow the uncomplicated replacement of previous models or even gas water heaters. No inconvenience for your home - proper installation without the need for major reconstruction work.

atmoTEC and turboTEC

atmoTEC plus & turboTEC plus: First Class

Made easy for new buildings and modernisation

The appliances of the atmoTEC plus & turboTEC plus range can be used in buildings ranging from single-family houses up to industrial buildings since they can be connected in a cascade or combined with warm water storages. The Plus range is also the ideal modernisation solution. The new generation of boilers is the first choice in all residential houses as they are even easier to install and operate.



Top design - also for installation and use

Just have a look at the new design: the new developed casing consists of three parts which facilitates maintenance, since the appliance can

be accessed quicker and installed easier in niches.

The adjustable bracket ensures an easy installation of the appliance on the wall - it can be put into the right position without complications.

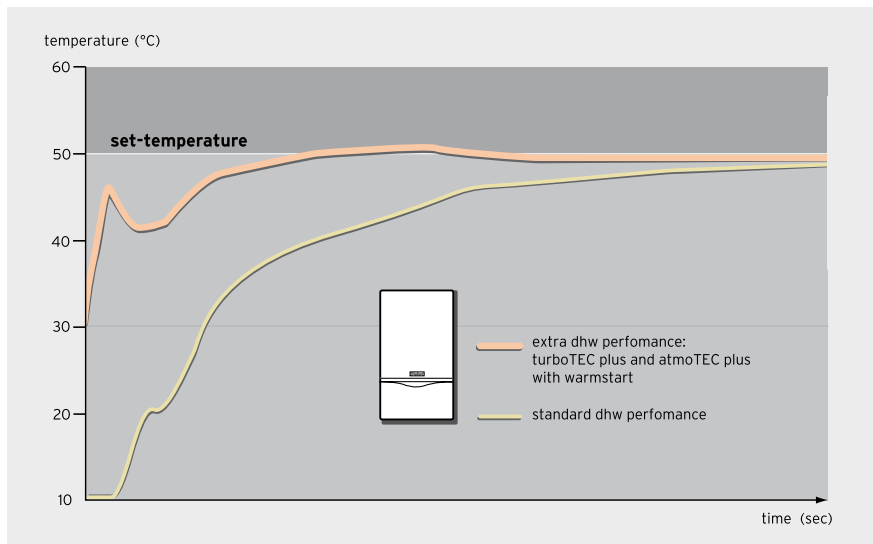
The front flap with a handle as well as the ergonomic knobs and the illuminated display are newly designed and make the handling of the appliance practical and extremely convenient.



Comfort for your home

Features of atmoTEC plus & turboTEC plus at a glance:

- Output versions of 24, 28 and 36 kW as heating appliance and 24, 28, 32 and 36 kW as mixed unit for heating and generation of domestic hot water
- Warm start function
- Quick installation due to adjustable wall bracket and pipe cut-out
- Easy maintenance due to three piece casing
- Maximum ease of handling
- Very quiet operation
- Ideal for modernisation as well as new construction
- Combinable with water storage range for even higher warm water demand
- Combinable with solar system
- Combinable with our full range of controls and room thermostats



More innovations for even more comfort for shower and bath

The integrated warm start function and the outlet sensor ensure faster hot water production at a stable temperature. There is no need to wait for your warm water!

Improved safety and monitoring function

Additional sensor functions in the appliance increase its "intelligence". The atmoTEC plus has a newly developed flue gas sensor system, our new AtmoGuard. With this open flue control we managed to improve its predecessor which was already

known as the best in the market. A reliable operation is ensured and any failures in the systems are detected automatically and reported to the DIA-system. Furthermore, these functions allow the appliance to be connected to our wide range of control systems.



atmoTEC pro & turboTEC pro: a reliable friend



Easier to install

The pro range is easily and quickly installed, too - even with small clearances at the sides. All components can be directly accessed from the front - maintenance and repair works are simplified. The innovative operating concept make it easily accessible for the user and the installer alike. The appliances information display can be handled conveniently with its large non-slip knobs and its helpful status and info display.

The reduced dimensions and weight make it fit everywhere in your home. It is totally flexible in fitting. The improved technology will not only present you with the well-known quality and high standard of Vaillant appliances - but rather we prove once again that we are able to improve what was already known to be excellent!

Features of atmoTEC pro & turboTEC pro at a glance:

- Output capacity: 24 kW
- Compact dimensions, low weight
- Suitable also for solar installation
- Combinable with control technology
- Easy and quick installation
- User-friendly and reliable operation

Chose the atmoTEC pro / turboTEC pro and just forget about your boiler... just enjoy the comfort of German innovative technology!

Warm water comfort for your family: atmoTEC/turboTEC plus with uniSTOR VIH



In combination with any of our warm water storages, you can further extend your warm water comfort. Enjoy the flexibility and convenience our appliances introduce into your and your families lives. You will not have to worry about enough warm water in the morning.

Chose our VIH 70 as wall hung version or our VIH R range in the capacities 120, 150 and 200 litres - just as per your warm water requirement.

Features of VIH at a glance:

- Easy connection between boiler and storage
- Wall hung version with 70 l capacity
- Floor standing storage in round design for 120, 150, 200 l
- Appreciated Vaillant family design, aligned for boiler and storage
- atmoTEC / turboTEC system boilers equipped with diverter valve
- Range of connection accessories available
- Steel tank with CSC-free insulation

Technical specifications atmoTEC / turboTEC

Heating & warm water comfort	unit	atmoTEC / turboTEC pro		atmoTEC / turboTEC plus					
		open flue	fan flue	fan flue	open flue	fan flue	fan flue	fan flue	
		VUW EXP 240/3-3 M	VUW EXP 242/3-3 M	VU/W EXP 242/3-5	VUW EXP 280/3-5	VU/W EXP 282/3-5	VUW EXP 322/2-5 H	VU/W EXP 362/2-5 H	
Heat output range									
Max.	kW	24	24	24	28	28	32	36	
Min.	kW	10	10	10	11	11	10	11	
Heating									
Maximum pressure heating circuit	bar	3							
Min. system pressure for start	bar	0,5							
Warmstart function		no			yes				
Volume internal expansion vessel	l	6	6	6	10	10	10	10	
Heat exchanger plates		13	13	19	19	19	19	19	
Sanitary warm water (combination boiler versions only)									
Warm water output									
Max.	kW	24	24	24	28	28	32	36	
Min.	kW	1,5	1,5	1,5	1,5	1,5	1,5	1,5	
Warm water flow rate $\Delta T = 30K$ rise	l/min	11,5	11,5	11,5	13,4	13,4	15,3	17,2	
Max. inlet water pressure	bar	10							
Min. water flow pressure	bar	0,15							
Enduser hot water temp. adjustment	°C	35-65							
Weight	kg	30	32	36	33	37	38	38	
Height x width x depth	mm	700 x 410 x 298			800 x 440 x 338				
Electr. protection class		IP X4D							
Others: Pump control		2-speed manual			2-speed automatic				

Available as system boiler units VU EXP 242/3-5, VU EXP 282/3-5 and VU EXP362/3-5

Warm water storages for combination with system boilers	unit	VIH CK 70	VIH R 120/5	VIH R 150/5	VIH R 200/5
Installation type		wall	floor	floor	floor
Height	mm	800	752	970	1240
Width x depth	mm	440 x 380	-	-	-
Diameter	mm	-	560	600	600
Weight net	kg	55	68	79	97
Weight in operation status	kg	120	183	229	297
Electrical connection					
Nominal voltage	m ² /h	-	1,6	1,6	1,6
Pressure loss	mbar	-	50	50	65
Protection class		-	IP 24		
Hydraulic connection					
Cold/warm water	thread	3/4"	3/4"		
Primary flow and return	thread	3/4"	1"		
Circulation	thread	-	3/4"		
Performance data storage water heater					
Capacity	l	63	115	150	200
Max. water supply pressure	bar	10	10	10	10
Max. warm water temperature	°C	75	85	85	85
Hot water output power	l/10 min	130	145	195	250
Continuous power performance 85/65°C	kW	30	25	26	34
Continuous power performance 85/65°C	l/h	740	615	660	750
Stand-by energy losses	kWh/24h	0,95	1,3	1,4	1,6
Tank lining		enamelled steel, magnesium safety anode			

Connection accessory and safety groups are also part of our range - ask your dealer for them!

Vaillant GmbH

Berghauser Str. 40 ■ 42859 Remscheid ■ Phone 0049+(0)2191/-18-0
Telefax 0049+(0)2191/-18-3090 ■ www.vaillant.de ■ info@vaillant.de